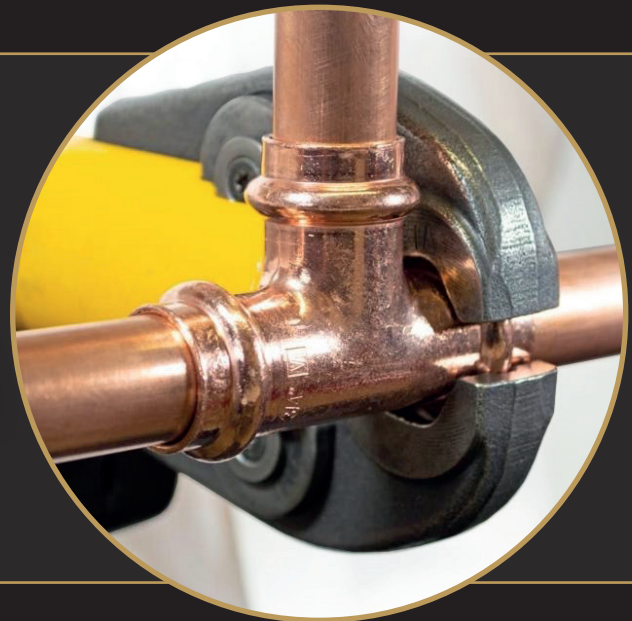




Instantor[®]

Copper Press

For **New Zealand** Copper Pipe



Superior Plumbing Products
Manufactured by **Sanbra Fyffe**

Distributed in New Zealand by



Breson

www.instantor.ie



Instantor[®]

Copper Press

Product Overview

VI Profile - Sizes 1/2, 3/4" & 1"

Instantor Copper Press fittings offer a high-quality modern solution with flame free jointing for faster and safer installation.

Instantor Copper Press fittings are WRAS approved and manufactured to EN 1254-7. Fittings include a specially designed pre-lubricated EPDM O-Ring with a Leak-Before-Press feature on each connection, which when pressed correctly, deliver a water-tight seal in seconds without the need for any solder.

Quick to install in 5 simple steps – Cut, Calibrate, Check, Mark, & Press, - saving on time and costs when compared with traditional copper solder methods.

Application

Fittings with black EPDM O-Rings are designed for use in hot and cold water services, heating systems* and chilled water.

Instantor Copper press fittings are designed to be used with hard or half hard copper pipe conforming to EN 1057.

- *Excluding solar heating applications
- *Excluding solid fuel primary pipelines

Features

- Flame Free Jointing. No hotworks permit required. Flame free installation makes for a safer job and shortened project times.
- Quick & simple to install. Faster than traditional solder methods, saves on time and material costs.
- WRAS Approved. Instantor Copper press fittings are WRAS approved. Imperial Approval # 2003301
- EPDM O-Rings with Leak-Before-Press feature designed to identify un-pressed joints during system testing.
- 'VI' Profile jaw for Irish/Imperial fittings.
- Operating Pressure/temperatures – 16bar @ 30°C, 10bar @ 95°C. Max 110°C, Min -25°C
- Aesthetically Pleasing Finish. Flux and heat free system provides for a neater, cleaner finish.

Pipe Support

Pipe supports should be used to prevent movement and vibration in the finished system. See page 7

Guarantee

Copper is known for its durability, corrosion resistance, thermal conductivity, and hygienic qualities. In some cases, (e.g. chilled water lines) external protection may be required to protect against corrosive conditions.

Instantor Copper Press fittings are guaranteed for 25 years provided they have been installed following correct procedure within operating conditions for which they are designed, by a fully qualified plumber using the correct pressing equipment which holds a valid calibration certificate

Spacing Between Fittings

Minimum spacing between fittings is recommended as follows:

1/2" (15mm)	- 10mm space
3/4" (22mm)	- 20mm space
1" (28mm)	- 20mm space

Warning

Due care should be taken to prevent damage to copper press fittings and O-rings by heat transfer due to nearby brazing.

High temperature can anneal copper pipe making it too soft for press fit.

System Testing

Pressure testing on Instantor Copper Press fittings should normally be carried out using clean potable water in accordance with EN806.

System Testing Cont.

All fitting joints installed in the system must remain completely visible and accessible until the system has been successfully leak and pressure tested.

After flushing, fill the system with clean potable water ensuring all trapped air has been expelled. Apply pressure between 1 and 2 bar and perform inspection for un-pressed fittings. If un-pressed fittings are identified, they may be pressed without draining the system. Do not press fittings more than once. When satisfied, no un-pressed fittings remain, increase pressure slowly to the system test pressure. Testing of the system should be carried out in accordance with EN806 to 1.1 times the working pressure (Maximum Design Pressure) of the system.

Full test pressure should hold for a minimum of 30 minutes without any sign of drop in pressure. Final visual inspection should then be carried out to confirm system is leak tight.

Application



1 - Cut

1. **Cut Pipe** - Ensure that the fitting is the correct size for the tube being used. Cut the pipe to length using a good quality pipe cutter or rotary pipe cutter. It is important that pipe ends are clean, cut square, and the pipe is not deformed. High speed grinding wheels are not suitable.



2 - Calibrate

2. **Calibrate** - All burrs and sharp edges should be removed. Using a de-burring tool to both the inside and outside of the pipe, leaving an external chamfer. Wipe the pipe end clean. The pipe ends should be free from scratches or scores for a distance not less than the socket depth.

NOTE: A poorly calibrated pipe could damage the O-ring on insertion.



3 - Check

3. **Check O-Ring** - Before inserting the pipe, check the O-ring is seated, lubricated and free from damage. (Re-moisten O-ring with water if necessary**)



4 - Mark

4. **Mark Insertion Depth** - Insert the pipe fully into the socket of the fitting until it hits the pipe stop (or until pipes meet in the middle in fittings without a pipe stop). Mark the insertion depth with black marker to ensure the pipe has been fully inserted before pressing.

Size	Depth
1/2" (15mm)	20mm
3/4" (20mm)	21mm
1" (25mm)	23mm



5 - Press

5. **Press** - Making sure to select the correct profile Jaw ('VI' for Imperial/Irish Instantor Copper Press & 'M' for metric Instantor Copper Press), execute the press cycle. After the press tool cycle is complete remove the Press Jaws and check that the socket depth marking on the pipe has remained in place, adjacent to the mouth of the fitting.

NOTE: ** Fittings should be kept in original packaging to protect the O-ring and prevent drying out of lubrication.

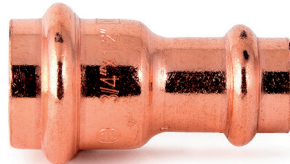
Imperial Fittings

ICP310 Straight Coupler



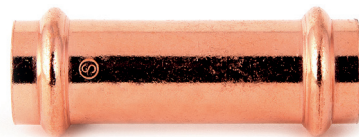
CODE	SIZE	PACK QTY	PRICE
ICP310-15	1/2" / 15mm	10	
ICP310-20	3/4" / 20mm	10	
ICP310-25	1" / 25mm	10	

ICP310 Straight Reducer



CODE	SIZE	PACK QTY	PRICE
ICP310-20x15	3/4" x 1/2" / 20x15mm	10	
ICP310-25x15	1" x 1/2" / 25x15mm	10	
ICP310-25x20	1" x 3/4" / 25x20mm	10	

ICP310 Slip Coupler



CODE	SIZE	PACK QTY	PRICE
ICP310-15S	1/2" / 15mm	10	
ICP310-20S	3/4" / 20mm	10	
ICP310-25S	1" / 25mm	10	

ICP311 - DZR Straight Coupler M.I x Press



CODE	SIZE	PACK QTY	PRICE
ICP311-15	1/2"/M x 1/2" Press / 15mm	10	
ICP311-20	3/4" M x 3/4" Press / 20mm	10	
ICP311-25	1" M x 1" Press / 25mm	10	

Not WRAS Approved

ICP312 - DZR Straight Coupler F.I x Press



CODE	SIZE	PACK QTY	PRICE
ICP312-15	1/2" F x 1/2" Press / 15mm	10	
ICP312-20	3/4" F x 3/4" Press / 20mm	10	
ICP312-25	1" F x 1" Press / 25mm	10	

Not WRAS Approved

ICP315 Elbow



CODE	SIZE	PACK QTY	PRICE
ICP315-15	1/2" / 15mm	10	
ICP315-20	3/4" / 20mm	10	
ICP315-25	1" / 25mm	5	
ICP315-20x15	3/4" x 1/2" / 20x15mm	10	
ICP315-25x15	1" x 1/2" / 25x15mm	5	
ICP315-25x20	1" x 3/4" / 25x20mm	5	

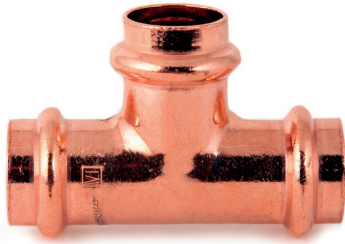
ICP321- DZR Wallplate Elbow



CODE	SIZE	PACK QTY	PRICE
ICP321-15	1/2" / 15mm	10	
ICP321-20	3/4" / 20mm	10	

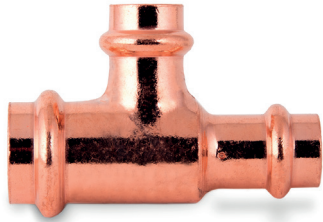
Not WRAS Approved

ICP318 Equal Tee



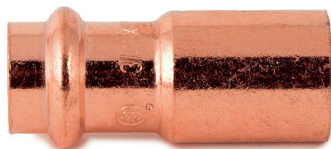
CODE	SIZE	PACK QTY	PRICE
ICP318-15	1/2" / 15mm	10	
ICP318-20	3/4" / 20mm	10	
ICP318-25	1" / 25mm	5	

ICP318 Reducing Tee



CODE	SIZE	PACK QTY	PRICE
ICP318-15x15x20	1/2" x 1/2" x 3/4" / 15x15x20mm	10	
ICP318-20x15x15	3/4" x 1/2" x 1/2" / 20x15x15mm	10	
ICP318-20x15x20	3/4" x 1/2" x 3/4" / 20x15x20mm	10	
ICP318-20x20x15	3/4" x 3/4" x 1/2" / 20x20x15mm	10	
ICP318-20x20x25	3/4" x 3/4" x 1" / 20x20x25mm	5	
ICP318-25x15x15	1" x 1/2" x 1/2" / 25x15x15mm	5	
ICP318-25x15x20	1" x 1/2" x 3/4" / 25x15x20mm	5	
ICP318-25x15x25	1" x 1/2" x 1" / 25x15x25mm	5	
ICP318-25x20x15	1" x 3/4" x 1/2" / 25x20x15mm	5	
ICP318-25x20x20	1" x 3/4" x 3/4" / 25x20x20mm	5	
ICP318-25x20x25	1" x 3/4" x 1" / 25x20x25mm	5	
ICP318-25x25x15	1" x 1" x 1/2" / 25x25x15mm	5	
ICP318-25x25x20	1" x 1" x 3/4" / 25x25x20mm	5	

ICP319 Fitting Reducer



CODE	SIZE	PACK QTY	PRICE
ICP319-20x15	3/4" x 1/2" / 20x15mm	10	
ICP319-25x15	1" x 1/2" / 25x15mm	10	
ICP319-25x20	1" x 3/4" / 25x20mm	10	

ICP325 Obtuse Street Elbow



CODE	SIZE	PACK QTY	PRICE
ICP325-15	1/2" / 15mm	10	
ICP325-20	3/4" / 20mm	10	
ICP325-25	1" / 25mm	5	

ICP335 Street Elbow



CODE	SIZE	PACK QTY	PRICE
ICP335-15	1/2" / 15mm	10	
ICP335-20	3/4" / 20mm	10	
ICP335-25	1" / 25mm	5	

ICP345 Obtuse Bend



CODE	SIZE	PACK QTY	PRICE
ICP345-15	1/2" / 15mm	10	
ICP345-20	3/4" / 20mm	10	
ICP345-25	1" / 25mm	5	

ICP351 Stop End



CODE	SIZE	PACK QTY	PRICE
ICP351-15	1/2" / 15mm	20	
ICP351-20	3/4" / 20mm	15	
ICP351-25	1" / 25mm	10	

Tools & Accessories

Press Guns

CODE	SIZE	PRICE
ICP20020VI REMS 578X04	REMS Mini Press Gun 14.4V Battery Incl. 1/2" (15mm), 3/4" (20mm) & 1" (25mm) VI Jaws & Case	
ICP20041VI REMS 578X05	REMS Mini Press Gun 22V Battery Incl. 1/2" (15mm), 3/4" (20mm) & 1" (25mm) VI Jaws & Case	
ICP20040VI REMS 578X08	Straight REMS Mini Press Gun 22V Battery Incl. 1/2" (15mm), 3/4" (20mm) & 1" (25mm) VI Jaws & Case	
ICP20021	REMS 14.4V Battery	
ICP20042	REMS 22V Battery	



Jaws

CODE	SIZE	PRICE
ICP20019	1/2" / 15mm VI Jaws	
ICP20020	3/4" / 20mm VI Jaws	
ICP20021	1" / 25mm VI Jaws	



Manual Deburring Tool

CODE	SIZE	PRICE
ICP20015	Ø3-35mm - Manual - Yellow	
ICP20015H	Ø8-35mm - Manual Heavy Duty - Silver	



Pipe Cutters

CODE	SIZE	PRICE
900115	1/2" / 15mm	
900122	22mm	
900121	3/4" / 20mm	
900117	28mm	
900123	1" / 25mm	



REMS Hand Pressure Testing Pump

CODE	SIZE	PRICE
ICP20043	60 bar Pressure Testing Pump	



No. 60 Rubber Lined Clips

CODE	SIZE	PACK QTY	PRICE
673414 PK	15 - 19mm	1	
673420 PK	20 - 25mm	1	
673426 PK	26 - 30mm	1	



No. 36 Cast Brass Screw On Brackets

CODE	SIZE	PACK QTY	PRICE
673010 PK	15mm	100	
673020 PK	22mm	50	
673030 PK	28mm	50	



No. 90 Snap In Plastic Clips

CODE	SIZE	PACK QTY	PRICE
695010 PK	15mm	100	
695020 PK	22mm	100	
695030 PK	28mm	100	



No. 92 Nail In Clips

CODE	SIZE	PACK QTY	PRICE
695062 PK	15mm	100	
695063 PK	22mm	100	
695064 PK	28mm	100	



No. 93 Snap Over Clips

CODE	SIZE	PACK QTY	PRICE
695110 PK	15mm	100	
695120 PK	22mm	100	
695130 PK	28mm	100	



Superior Plumbing Products
Manufactured by Sanbra Fyffe –



Instantor[®]
Copper Press

Certification



Sanbra Fyffe Ltd, The
Makers of Instantor, is an
ISO 9001:2015 quality
assured company.

T +353 1 842 6255 E sales@instantor.ie www.instantor.ie

Sanbra Fyffe Ltd.

Instantor Works, Santry Avenue, Santry, Dublin D09 K160

Instantor Copper Press Fittings
are distributed in New Zealand by



Breson Fittings Ltd
62G Mahia Road
Manurewa 2102

www.breson.co.nz
T 09 267 0893
E breson@xtra.co.nz



Make the connection
with us socially