

TUCSON[®]

Fluid Dynamics



Circulating Pumps

Multi Stage Pumps

Pump Accessories

Product
Catalogue

3 YEAR WARRANTY

Tucson 5M, 6M & 8M Energy Efficient Circulating Pumps



ErP
COMPLIANT

Features

- User-friendly control panel
- Suitable for domestic & light commercial applications
- Robust construction
- Compact size
- Easy installation
- 3 years manufacturers warranty

Technical Data

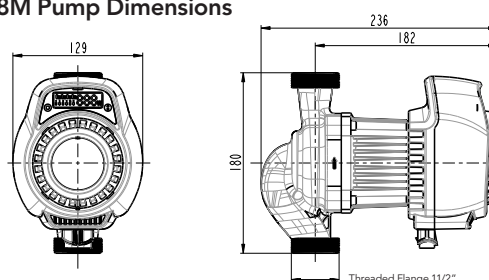
- EEI (Energy Efficiency Index) ≤ 0.23
- Voltage: Single Phase, 230 volts +/-10%
- Frequency: 50 Hz
- 5M & 6M Speed: 1 to 3 + Auto
- 8M Speed: 1 to 6 + Auto
- Isolation: Class F
- Operating Environment Temperature: 5°C to 40°C
- Minimum and Maximum Fluid Temperatures: 5°C to 95°C
- Max Working Pressure: 10 Bar
- Min Working Pressure: 0.05 Bar @ 50°C
- Waterproof Rating: IP44
- 5 & 6M Pump Weight: 2.35Kg
- 8M Pump Weight: 3.6 Kg
- Body Material: Cast Iron

Accessories Included

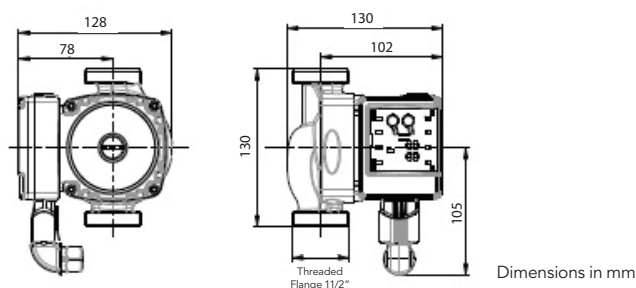
- 5M & 6M - Terminal Plug and Rubber Gaskets
- 8m - Terminal Plug and Rubber Gaskets

CODE	PRODUCT	PALLET QTY	PRICE \$
TUC-5A	5 Metre Head	256	
TUC-6A	6 Metre Head	256	
TUC-8A	8 Metre Head	144	

8M Pump Dimensions



5M & 6M Pump Dimensions



Dimensions in mm

General notes - ErP (ecological design) directive
The benchmark for the most efficient circulators is $EEI \leq 0.20$

3 YEAR WARRANTY

Tucson 6M Head Bronze Body Energy Efficient Circulating Pump



Features

- User-friendly control panel
- Suitable for domestic & light commercial applications
- Robust construction with corrosion resistant materials
- Compact size
- Easy installation
- 3 years manufacturers warranty

Technical Data

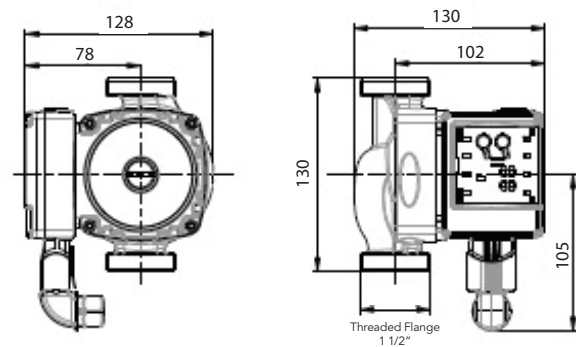
- EEI (Energy Efficiency Index) ≤ 0.23
- Voltage: Single Phase, 230 volts +/-10%
- Frequency: 50 Hz
- Speed: 1 to 3 + Auto
- Isolation: Class H
- Operating Environment Temperature: 5°C to 40°C
- Minimum and Maximum Fluid Temperatures: 5°C to 110°C
- Max Working Pressure: 10 Bar
- Min Working Pressure: 0.05 Bar @ 50°C
- Waterproof Rating: IP42
- Pump Weight: 2.5 Kg
- Body Material: Bronze

Accessories Included

- Rubber Gaskets

CODE	PRODUCT	PALLET QTY	PRICE \$
TUC-6ABRZ	6 Metre Head	256	

6M Bronze Body Pump Dimensions



Dimensions in mm

3 YEAR WARRANTY

Tucson MBP45 600W Modulating Multistage Pump



MBP45 Features

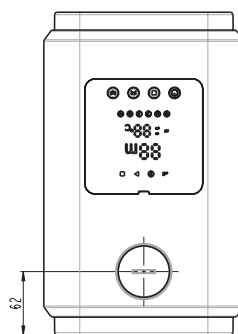
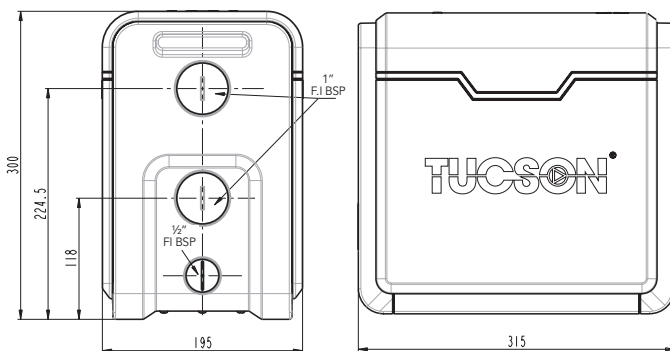
- Automatic multistage centrifugal pumping system
- Constant or modulating select feature
- Pressure or temperature select feature
- Utilises dry run protection feature
- High temperature warning feature
- Ergonomic and compact design
- Easy to install and operate
- Utilises an integrated flow switch
- Utilises an integrated pressure switch
- Utilises an integrated non-return valve
- User friendly integrated control panel
- Powerful & efficient variable speed motor
- Three-year manufacturers product warranty
- High-performance air-cooled motor housing
- Adjustable constant pressure motor controller
- Robust component design and construction
- Suitable for domestic & light commercial applications
- Quiet operation, less than 45 DB at five meters distance

Technical Data

- Motor Size: 0.8 HP / 600 Watt
- Motor Type: Variable Speed
- Rated Head: 25M
- Maximum Head: 45M
- Maximum Pressure: 4.5 Bar
- Maximum Flowrate / Q Max: 4.5M Cubed / 75L/Min
- Minimum and Maximum Fluid Temperatures: 5°C to 95°C
- Operating environment temperature 5 – 50 Degrees
- Motor water proof rating: IP44
- Maximum operating pressure 10 Bar
- Insulation class-F
- Pump weight: 14.2 Kg
- Inlet and Outlet connection sizing – 1" FI BSP

CODE	PRODUCT	PALLET QTY	PRICE \$
TUC-MBP45	MBP45	24	

MBP-45 Pump Dimensions



Dimensions in mm

3 YEAR WARRANTY

Tucson SBP90 370W Multistage Pump



SBP90 Features

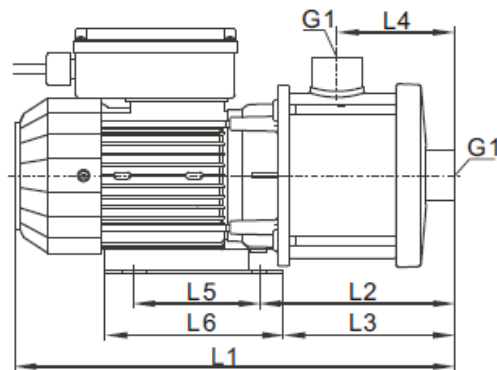
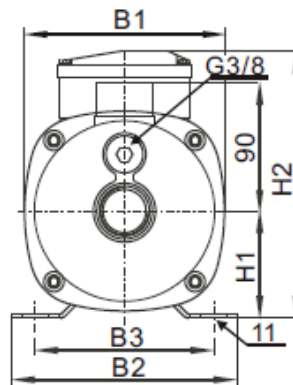
- Compact design
- Powerful & efficient
- Easy to install and operate
- Utilises dry run protection
- Utilises an integrated flow switch
- Utilises an integrated pressure switch
- Utilises an integrated non-return valve
- Adjustable start-up pressure controller
- User friendly unintegrated control panel
- High-performance air-cooled motor housing
- Automatic multistage centrifugal pumping system
- Suitable for domestic & light commercial applications
- Robust construction with stainless steel bodied pump
- Quiet operation, less than 45 DB at five meters distance
- 3 years manufacturers warranty

Technical Data

- Motor Size: 1/2 HP / 370 Watt
- Motor Type: Induction
- Rated Head: 33M
- Maximum Head: 37M
- Maximum Pressure: 3.7 Bar
- Maximum Flowrate / Q Max: 4 M Cubed / 66.6 L/Min
- Maximum Fluid Temperature: 50°C
- Operating environment temperature 5 – 50°C
- Motor water proof rating: IP54
- Controller water proof rating: IP65
- Controller Maximum operating pressure 10 Bar
- Insulation class-F
- Pump weight: 9.2 Kg
- Inlet and Outlet connection sizing: 1" FI BSP & 1" MI BSP

CODE	PRODUCT	PALLET QTY	PRICE \$
TUC-SBP90	SBP-90	28	

SBP-90 Pump Dimensions



B1	B2	B3	H1	H2	L1	L2	L3	L4	L5	L6	G1
140	158	125	75	174	318	131	113	72	96	136	1" FI BSP

Dimensions in mm

3 YEAR WARRANTY

Tucson SBP100 550W Multistage Pump



SBP100 Features

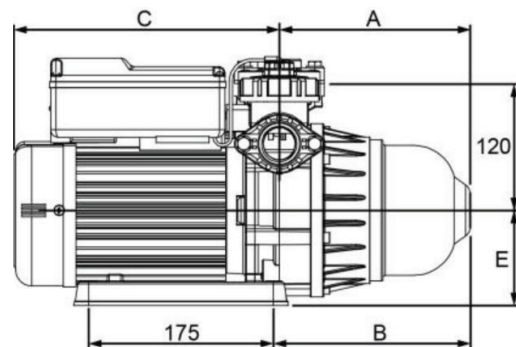
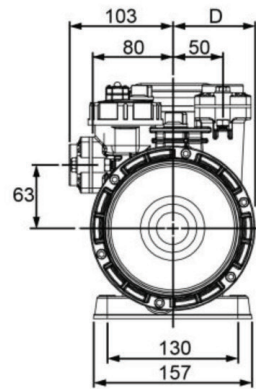
- Compact design
- Powerful & efficient
- Easy to install and operate
- Utilises dry run protection
- Utilises an auto initiate function
- Utilises an integrated flow switch
- Utilises an integrated pressure vessel
- Utilises an integrated pressure switch
- Utilises an integrated non-return valve
- Utilises a super-low flow start function
- User friendly integrated control panel
- Adjustable start-up pressure controller
- High-performance air-cooled motor housing
- Automatic multistage centrifugal pumping system
- Suitable for domestic & light commercial applications
- Robust construction with corrosion resistant materials
- Quiet operation, less than 55 DB at five meters distance
- 3 years manufacturers warranty

Technical Data

- Motor Size: ¾ HP / 550 Watt
- Motor Type: Induction
- Rated Head: 23M
- Maximum Head: 32M
- Maximum Pressure: 3.2 Bar
- Maximum Flowrate / Q Max: 4.4M Cubed / 73.3 L/Min
- Maximum Fluid Temperature: 50°C
- Operating environment temperature 5 – 50°C
- Water proof rating: IP54
- Insulation class-F
- Pump weight: 11.5 Kg
- Inlet and Outlet connection sizing: 1" FI BSP

CODE	PRODUCT	PALLET QTY	PRICE \$
TUC-SBP100	SBP-100	30	

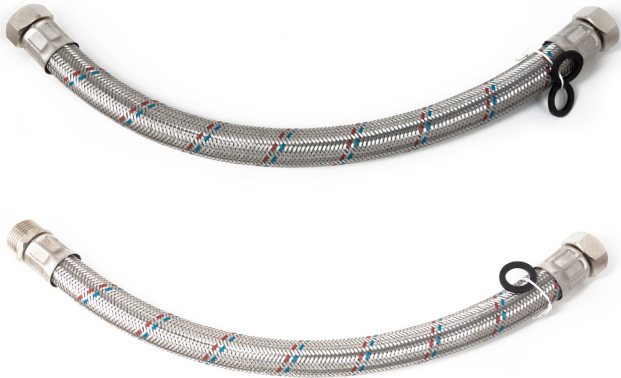
SBP-100 Pump Dimensions



A	B	C	D	E	G1
182	188	252	82	90	1" FI BSP

Dimensions in mm

Additional Products



Tucson Flexible Connection Pump Hoses- WRAS Approved EPDM

Component Material:
Brass, Stainless Steel Braided, EPDM Rubber

CODE	SIZE	HOSE LENGTH	BOX QTY	PRICE \$
TUC-PH25M5	1" BSP MI x FI	500mm	50	
TUC-PH25F5	1" BSP FI x FI	500mm	50	
TUC-PH25M75	1" BSP MI x FI	750mm	50	
TUC-PH25F75	1" BSP FI x FI	750mm	50	

All hoses are supplied with gasket washers



Tucson Lever Action Pump Valves

Component Material:
Chrome Plated Brass Valve with Carbon Steel Handle

CODE	SIZE	BOX QTY	PRICE \$
TUC-PVL20C	1½" BSP x 20 mm CxC	50	
TUC-PVL25C	1½" BSP x 25 mm CxC	50	
TUC-PVL20F	1½" BSP x 20 mm FI	50	
TUC-PVL25F	1½" BSP x 25 mm FI	50	

All valves are supplied with gasket washers



MPS1



APS1

Pressure Switches

CODE	SIZE	BOX QTY	PRICE \$
TUC-MPS1	MPS1 - Pressure Switch Manual	50	
TUC-APS1	APS1 - Automatic Pressure Switch 1	12	
TUC-APS2	APS2 - Automatic Pressure Switch	12	

TUCSON[®]

Fluid Dynamics



Breson

T 09 267 0893 E breson@xtra.co.nz www.breson.co.nz

Breson Fittings Ltd

62G Mahia Road, Manurewa, Auckland 2102

Tucson Pumps Ltd.
Instantor Works
Santry Avenue, Santry
Dublin D09 K160

www.tucsonpumps.ie

Unpriced - Issue 1 - Dec 2020